



Presiding Bishop Gerald Causse
-- OUR Earthly Stewardship (Oct. 2022 Conf.)

Function: Develop Godlike attributes-all aspects

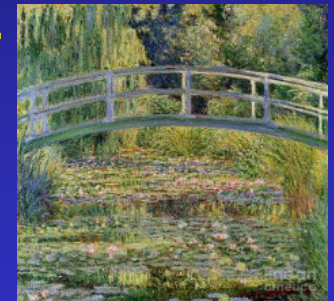
-How?

(i) Become like God by Ministering to our brothers and. Bis. Causse: Our stewardship includes, at its pinnacle, a sacred duty to love, respect and care for all human beings

(ii) Pres. Monson

-The Lord expects us to grow (learn), enhance and improve upon resources he has entrusted for our benefit.

-Bis. Causse: “We participate in the work of creation whenever we cultivate the earth or add our own constructions to this work.



(iii) Bishop Causse: We are invited to participate in the work of creation. God’s creations continue to grow and develop...

Participate through *scientific* and *medical* discoveries and use to bless lives of Others.

Ours is a search for truth

Ye shall know the truth and the truth shall make you free (John 8:31,32)

How do we search for truth?

- We rely on faith:
 - faith in the voice of the spirit –e.g., inspiration
 - faith in our scientific instruments that are much more sensitive than our natural senses
 - we frequently base our search on our hypotheses based on “impact”
 - our search can be an experiment as described by Amulek

Alma 34:3-41

vs. 4: ye have so much belief, you can plant the seed of faith and try the experiment to test its effect (goodness)

vs. 5: develop a question to test → e.g., is there a Christ?

vs. 8: steps: Listen to testimony of others that there is a Christ and how he is special (e.g., he atones for sins)

- must an infinite/perfect sacrifice
- satisfies the meaning of the Law
- critical defining elements include: mercy, justice and ultimately empower to repent through the force of faith

vs. 39: test is prayer (guidance) critical to proper use of faith with patience, endurance and hope

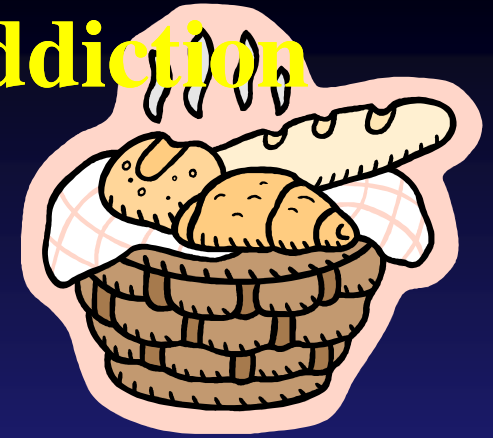
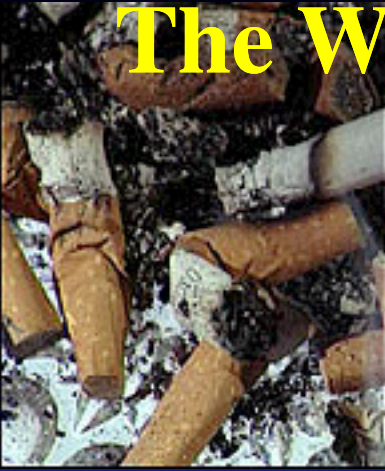
Example of using Amulek Principle

Addiction often viewed as bad people making bad decisions

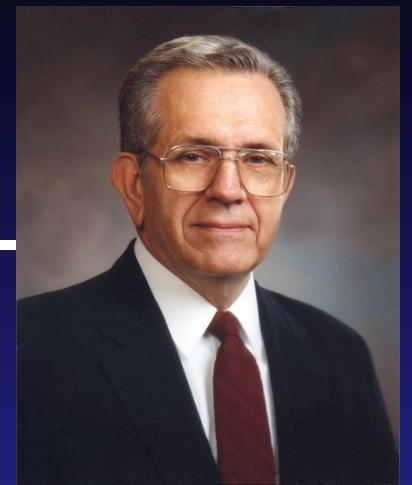
**Biomedical Basis of Addiction
--Gospel Perspective/ Medical Model**



The Word of Wisdom and Addiction (D & C 89)



- Given as a **principle with a promise**
- **Principle: make good decisions and select healthy life styles and avoid self-administering substances (or practices) that are pathogenic and lead to self-destructive behavior.**

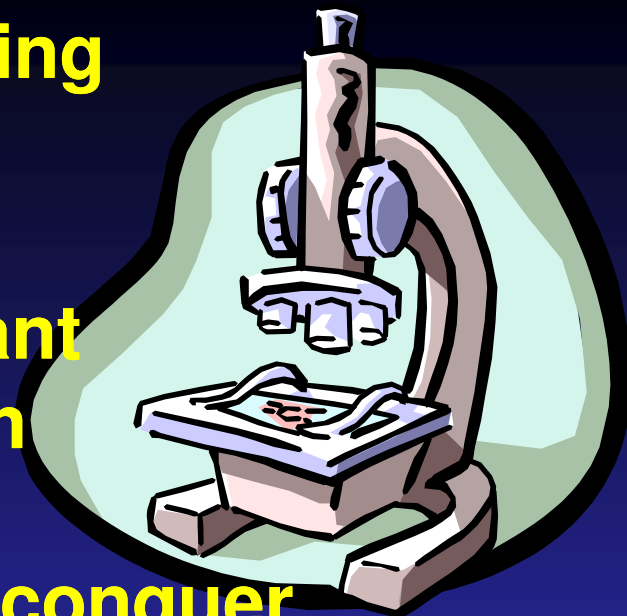


Elder Packer (1989):

“If we abuse our bodies with habit-forming substances or misuse prescription drugs, we draw curtains which close off the light of our spiritual communication... addiction has the power to disconnect the human will and nullify our moral agency. It can rob one of the power to decide.”

**Elder Packer's suggestion for dealing
with addiction:**

“It is my conviction and my constant prayer that there will come through research, through inspiration to scientists if need be, the power to conquer narcotic addiction through the same means which caused it... I plead with you to earnestly pray that somewhere, somehow the way will be discovered to erase addiction in the human body.”



Decade of the Brain

In 1990, Congress designated the 1990s the “Decade of the Brain.” President George H. W. Bush proclaimed, “A new era of discovery is dawning in brain research.” During the ensuing decade, scientists greatly advanced our understanding of the brain.

WHAT DID WE LEARN?



I, George Bush, President of the United States of America, do hereby proclaim the decade beginning January 1, 1990, as the Decade of the Brain. I call upon all public officials and the people of the United States to observe that decade with appropriate programs, ceremonies, and activities.

— George H. W. Bush —

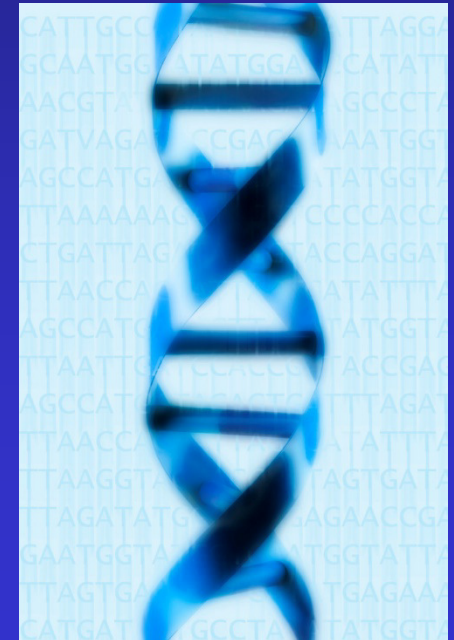
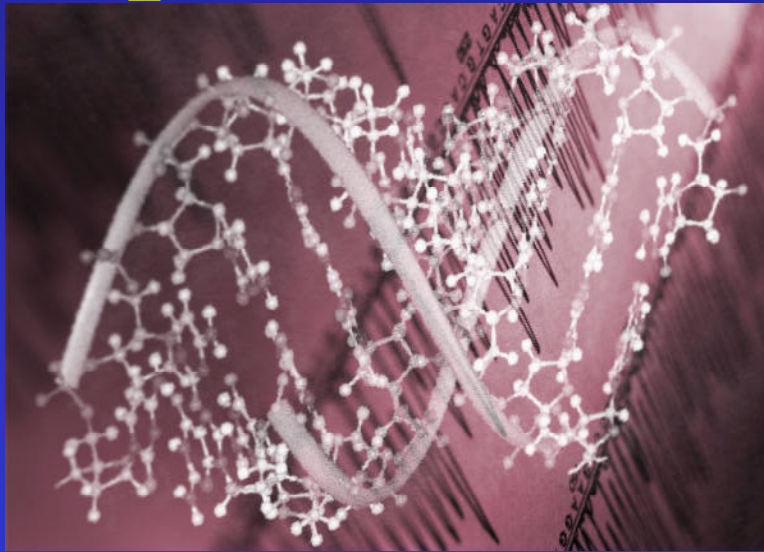
AZ QUOTES

SUD is a disorder of Cognition-
Processes of awareness, emotions,
information processing and
their impact on decision-making

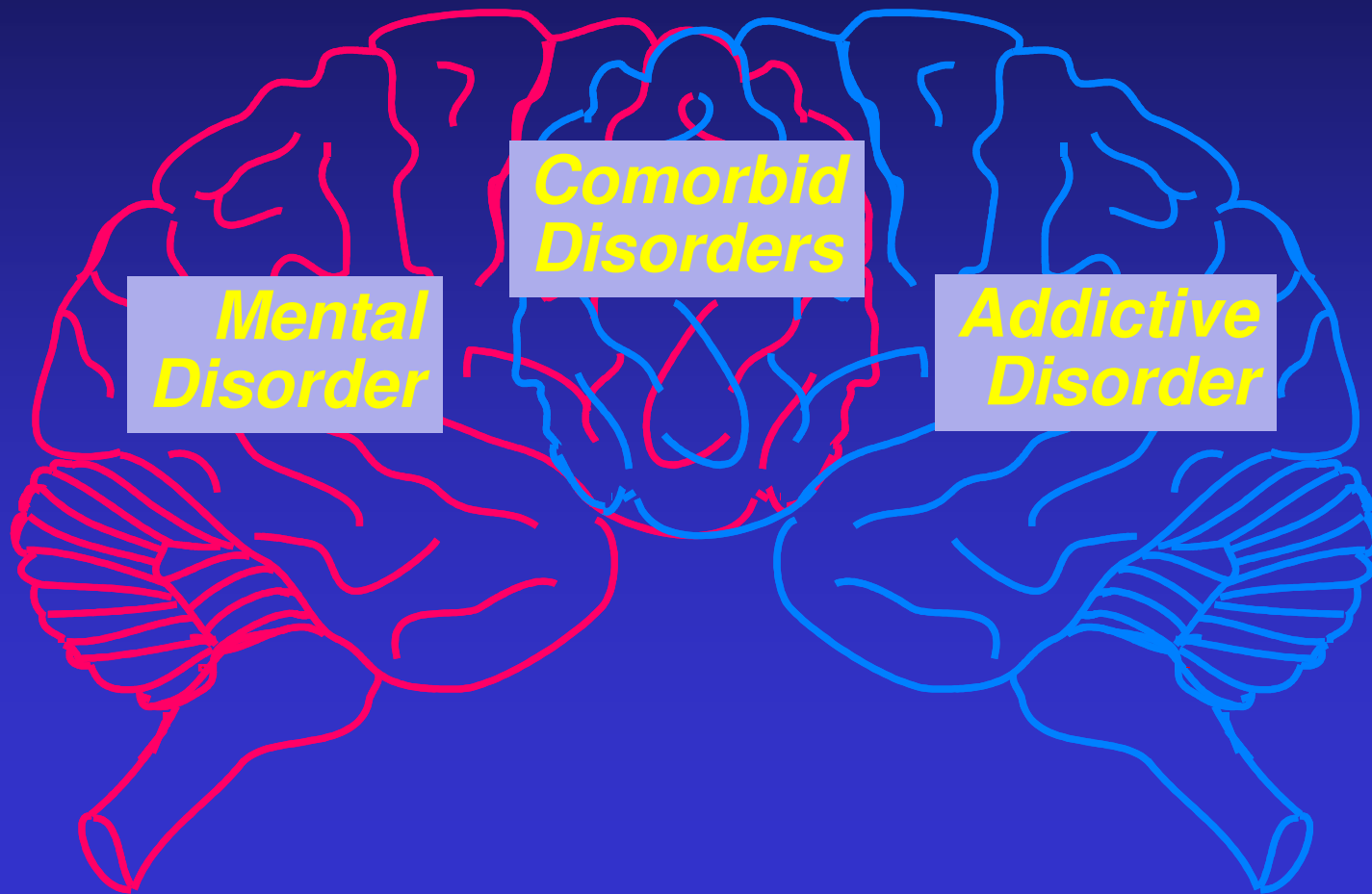


In General: Inheritability for Addiction Disorders Ranges From 40-60%

- *Some Variability Between Expressions*



**Comorbidity Common
(Atypical development?)
Mental and Addictive Disorders
Have a Double Brain Disease**



ROLE OF BRAIN IMAGING IN DIAGNOSING, TREATING, STUDYING SUD

Positron Emission Tomography (PET)

-measures binding of radioactive molecules



Magnetic Resonance Imaging (MRI)

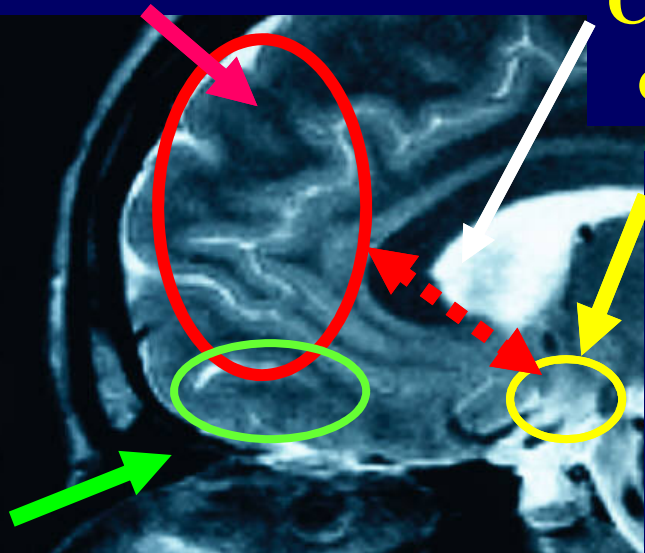
-measures blood flow

CNS Vulnerability

Prefrontal Cortex (PFC) integrates CNS information to make complex decisions behaviors (Go-No Go)

Inefficient control

Connecting pathway: allows PFC control over impulsivity



Amygdala/nucleus accumbens:

in s r emotional needs
• **strong, dominant dominance, reward system mediate**

Orbitofrontal cortex: establishes priorities and mo

• fouled up saliency ision making

Consequence:

- **More compassionate**
- **Approach treatment more like medical/mental health problem than criminal behavior**
- **Altered perspectives in all aspects of life including religion**

Bishop Causse:

All is spiritual to the Lord—including the most temporal (mortal) aspects of our lives
-we apply scientific principles properly to advance our understanding and ability to bless
others with this knowledge- this adds to our knowledge of God and His Son,

- Why is creation important to us? : it provides a temporary laboratory in which men/women can (i) be tested; (ii) exercise agency; (iii) find joy; (iv) learn more about their Heavenly Father; and (iv) prepare to return to His presence

Joseph Smith

D&C 131: 8 All spirit is matter, but it is more fine or pure, and can only be discerned by purer eyes

Brigham Young

“Spirits are just as familiar with spirits as bodies are with bodies, though spirits are composed of matter so refined”

Joseph Smith: Saints should study the purpose of life and death, in fact should study it “more than any other subject. Teachings of The Prophet Joseph Smith pg. 324.

The Spirit world is a real extension of our mortal existence,

...”the spirit world is the place where disembodied spirits go. It is a tangible, substantial sphere incorporated with our earth...It is a world closer than we realize ...

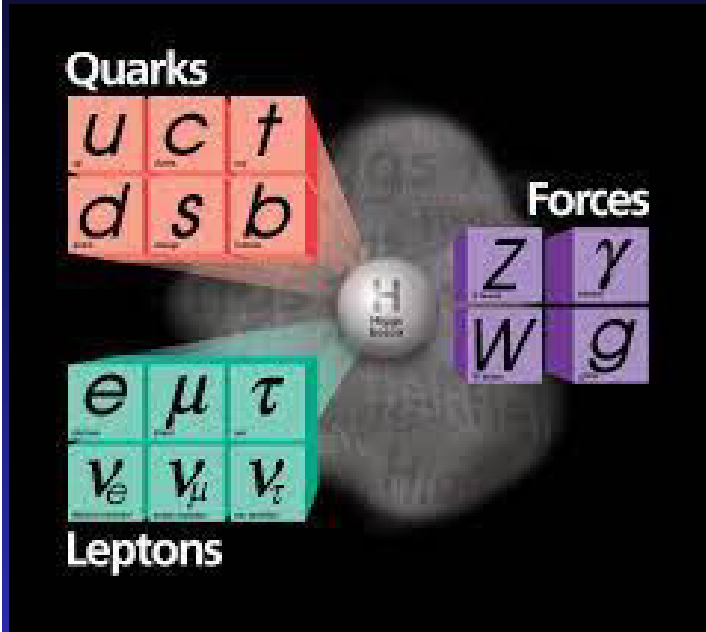
Ensign Jan. 1977 “The Spirit World, Our Next Home” by Dale C. Mouritsen. Special Ensign issue: External Implications of the Gospel.”

What has science revealed about “reality” in our mortal world? Does it have relevance to spirit/non-mortal existence?

-How do Joseph Smith’s statements about the material nature of “spirit” connect?

Most of our physics today studies the “Standard Model” or *Our Mortal State*

Some recently discovery subatomic particles



Elementary nuclear particles & come from protons and neutrons and include:

- 6 “flavors of quarks: up, down, strange, charm, bottom and top
- 6 types of leptons: electron, electron neutrino, muon, muon neutrino, tau, tau neutrino
- force carriers:
electromagnetism, weak and strong force, gravity

Are these the building blocks of everything, or can we break them down into finer and smaller particles using particle accelerators/colliders-

-- is spirit connected to these or to even finer building blocks?

--note: we do not have equipment that can detect finer particles-will we ever be able to measure finer matter?

Limitations of our scientific analysis of the principles of physics:

A. Barriers of Planck constant extremes:

i.e., these constants define the limits of critical measurements to accurately define and interpret physical phenomena and their relevance-

- We lack instruments/tools that are sophisticated/sensitive enough to reliably measure beyond these barriers:

- Planck length= 1.6×10^{-35} meters

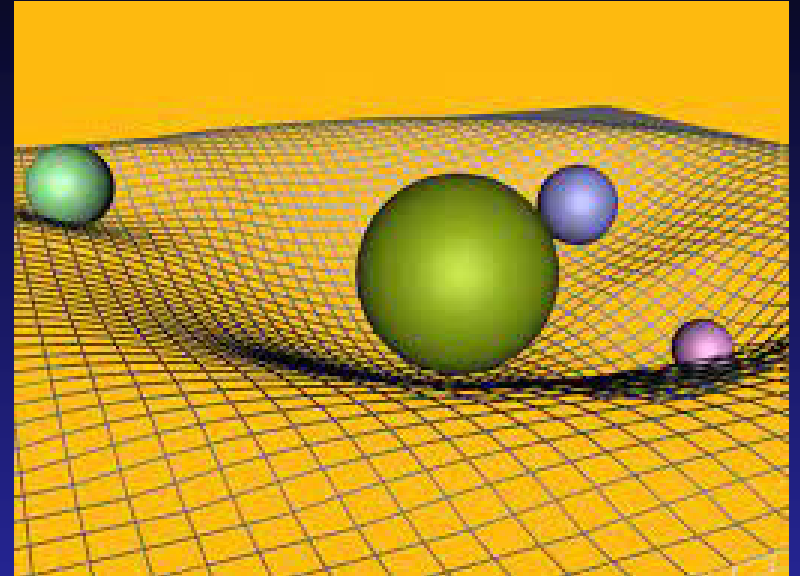
- we are unable to measure physical properties at shorter distances:

- e.g., conventional properties such as force gravity, light mechanics and subatomic particles (e.g., quarks, bosons and electrons), interactions breakdown

- Planck time= 5.4×10^{-44} sec : value for a photon to travel planck length. Standard model of physics can measure what happen –problem, most critical part of “big bang” phenomenon is shorter time

- Planck Temperature= 1.4×10^{-32} Kelvin (F about 30% higher). Standard physics cannot measure- this is the temperature at which much of black holes forms— need a quantum theory of gravity, but remains to be discovered and is ultra weak.

Spacetime Curvature: events are defined by 4 dimensions (3 dimensional space and 1 dimensional time)- and are distorted by gravitational/ mass forces



Impact:

(i) Because time is not absolute, we have Spacetime distortions (dilations): e.g., consequence impacts GPS mechanisms- time slows with increased gravitational pull (dilation) and for greater velocity (time dilation)

-GPS satellites experience ~ 7 microseconds delay/day due to the speed effect and must be adjusted for accuracy

(ii) Under certain conditions, time (beginnings and endings) has different or no relevance—e.g., outside of our 4 dimensions. Thus, in other dimensions, there likely is a different, or no, time as we know it

THE BIG BANG THEORY



Is big bang the beginning?

This is where the standard model is formed

HOW BIG is the UNIVERSE? Is the Big Bang the beginning?

Answer: Big Bang, at ~14 billion light years away, cannot be the beginning and we cannot know how big the Universe is

Why?:

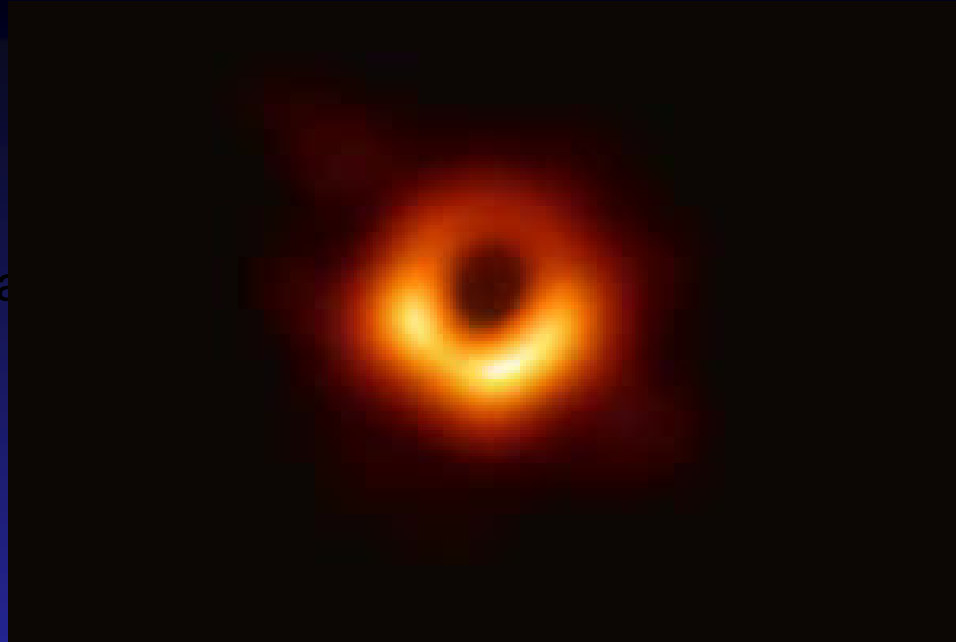
- At these distances, our standard model for time falls apart and space-time curvatures make accurate determinations very difficult
- Evidence is very strong that our universe is expanding very rapidly-contradicts original theories based on 'big bang'
- and the expansion in some places has exceeded speed of light that will make it impossible for us to see or measure.
- According to our best estimates, only 5% of our universe is made of normal matter that we can measure and study. The rest consists of dark matter (27%) and expanding dark energy (68%) possibility of a dark force that links our universe to to the dark universe.

Dr. Lincoln: anyone who insists that the Big Bang was the beginning of everything is either a "Scoundrel, a liar or a fool."

We know less than 1/billion of the physical nature of everything: Things we do not know include-dark matter, dark energy, dark force, nature of antimatter and its interaction with matter in big bang-can only account for 1/billion of the total matter

- Other parallel systems such as
 - multiple dimensions (we live in 4 dimensions) that can be variable sizes and co-existing with our standard dimensions
 - multiple universes and the formation of a new university is like the budding process you see in a lava lamp.

Big Ba



Black hole-much we do not know- it may be located in center of galaxies and required for them to form

- Time does not exist
- Gravity is at its maximum force (total collapse of matter-goes from multiple stars to the size of a basketball or smaller-perhaps made up of the very basic and smallest particle and prevents escape of almost anything, including light)
- It has a totally different physics than our earth, and is likely to tell us a great deal about how universes are formed and prepared for life

CONCLUSIONS:

Dr. Donald Lincoln, Senior Scientist

--His mission is: Looking for the answer to everything: reductionist approach.

—i.e., what are the building blocks for all things Lecture series: *The Theory of Everything: the Quest to explain all Reality*

- We know less than 1/billionth of the physical nature of everything:
Things we do not know include-dark matter, dark energy, dark force, nature of antimatter and its interaction with matter in 'big bang'-can only account for 1/billion of the total matter
- Other parallel systems such as
 - -multiple dimensions (we live in 4 dimensions) that can be variable sizes and co-existing with our standard model
 - -multiple universes and the formation of a new universe (e.g., big bang phenomenon) is like the budding process you see in a lava lamp.

Einstein: "I want to know God's thoughts" He wanted to know the theory for everything; i.e., what are the ultimate building blocks of Universe- including the fundamental particles, forces, how Universe began and how will it end.

I WOULD INCLUDE: How does (i) the spirit world, (ii) faith as a force and (iii) the mechanism of prayer and its power, fit in! Remember Joseph Smith; The Spirit World is an extension of our mortal existence